

Assistant Superintendent Report

SB Meeting- July 29, 2025

1) Summer School Report

a) **What Worked Well:**

- i) **Curriculum Support:** Many teachers appreciated the provided curriculum, which was well-structured and easy to follow.
- ii) **Additional Instructional Time:** Teachers highlighted the advantage of having extra time with students, allowing for deeper dives into concepts and skills.
- iii) **Logistical Support:** Several teachers mentioned that materials were provided without extra preparation
- iv) **Positive Student Experience:** Teachers noted that students enjoyed the routine and were excited to learn daily.

b) **Areas for Improvement:**

- i) **Classroom Size:** Teachers suggested that smaller class sizes would have been beneficial benefits.
- ii) **Attendance Challenges:** Attendance became an issue especially during the summer months with student involvement, i.e. local fairs.

c) **Advantages and Challenges of the Additional Three Weeks:**

- i) **Advantages:** Most teachers appreciated the extra time, allowing for more thorough instruction and time to work on skills students were struggling with.
- ii) **Challenges:** Some teachers felt that the additional time was unnecessary, especially toward the end when students' motivation started to drop.

d) **Interest in Teaching Again Next Year:**

- i) **Positive Responses:** Several teachers expressed a strong desire to return, praising the curriculum, support from BGC staff, and the opportunity to teach in a different role.
- ii) **Conditional Responses:** A few teachers indicated they would be willing to return but suggested adjustments to class sizes.

e) **Overall Takeaways:**

- i) Teachers had a generally positive experience with the Boys and Girls Club Summer School
- ii) There were concerns about class sizes, the fit of the curriculum for certain students, and the impact of attendance drops.
- iii) Most teachers were open to returning for next school year



ph: 574586.3129 fax: 574586.2600 101 John Glenn Drive Walkerton, IN 46574

2025 ILEARN Scores- WES, NL, and Urey (Grades 3-8)

<u>ELA and Math</u> <u>(3-8)</u>	<u>3rd</u>	<u>4th</u>	<u>5th</u>	<u>6th</u>	<u>7th</u>	<u>8th</u>	<u>Total</u>
Wa-Nee SC	56.50%	57.00%	44.10%	58.80%	56.60%	51.20%	53.90%
New Prairie SC	49.00%	54.00%	45.10%	42.00%	36.30%	37.30%	43.90%
South Central SC	47.20%	50.60%	40.60%	31.20%	34.30%	42.50%	41.20%
John Glenn SC	38.70%	28.40%	45.10%	35.30%	34.00%	31.40%	35.00%
Bremen SC	43.40%	28.70%	35.80%	35.90%	29.20%	37.00%	35.00%
Culver SC	55.90%	34.50%	32.00%	32.80%	18.00%	22.50%	33.10%
LaPorte SC	37.90%	37.70%	30.40%	31.60%	25.70%	33.30%	32.80%
Triton SC	22.10%	40.00%	23.90%	42.50%	29.60%	26.80%	30.70%
Plymouth SC	35.20%	36.30%	26.10%	24.90%	22.50%	27.50%	28.90%
Oregon Davis SC	28.60%	29.20%	40.00%	21.90%	26.30%	21.60%	27.90%
Knox SC	24.60%	34.70%	21.30%	14.40%	18.80%	30.90%	24.00%
Argos SC	14.00%	27.80%	32.50%	19.20%	21.60%	28.20%	23.20%
Union North SC	20.20%	23.30%	21.90%	23.50%	13.70%	12.80%	19.40%
South Bend SC	15.50%	17.20%	12.00%	13.20%	11.80%	13.50%	13.90%



ph: 5745963129 fax: 5745962660 101 John Glenn Drive Walkerton, IN 46574

2025 ILEARN Scores- WES, NL, and Urey (Grades 3-8)

<u>ELA (3-8)</u>	<u>3rd</u>	<u>4th</u>	<u>5th</u>	<u>6th</u>	<u>7th</u>	<u>8th</u>	<u>Total</u>
Wa-Nee SC	61.20%	62.20%	50.20%	61.80%	63.90%	56.30%	59.10%
New Prairie SC	52.00%	58.80%	54.40%	47.90%	46.80%	54.90%	52.60%
South Central SC	47.20%	51.90%	46.40%	39.00%	45.70%	60.00%	48.50%
John Glenn SC	41.30%	35.80%	50.70%	46.00%	48.90%	46.40%	44.70%
Triton SC	31.40%	44.00%	41.80%	52.10%	46.50%	50.70%	44.00%
Culver SC	59.30%	43.60%	50.00%	40.60%	31.10%	35.00%	43.50%
Oregon Davis SC	42.90%	33.30%	54.30%	31.30%	44.70%	35.10%	40.80%
Bremen SC	47.80%	33.00%	39.40%	42.70%	39.20%	41.00%	40.70%
LaPorte SC	43.40%	44.00%	37.80%	38.30%	33.60%	44.00%	40.20%
Plymouth SC	42.90%	43.50%	32.00%	29.60%	35.50%	39.30%	37.30%
Knox SC	32.20%	45.20%	29.10%	28.80%	27.70%	37.20%	33.30%
Argos SC	21.10%	37.00%	37.50%	30.80%	35.30%	41.00%	33.10%
Union North SC	23.20%	26.20%	27.10%	32.10%	17.60%	32.60%	26.60%
South Bend SC	20.70%	21.90%	21.80%	20.20%	22.20%	26.40%	22.20%



ph: 5745863129 fax: 5745862660 101 John Glenn Drive Walkerton, IN 46574

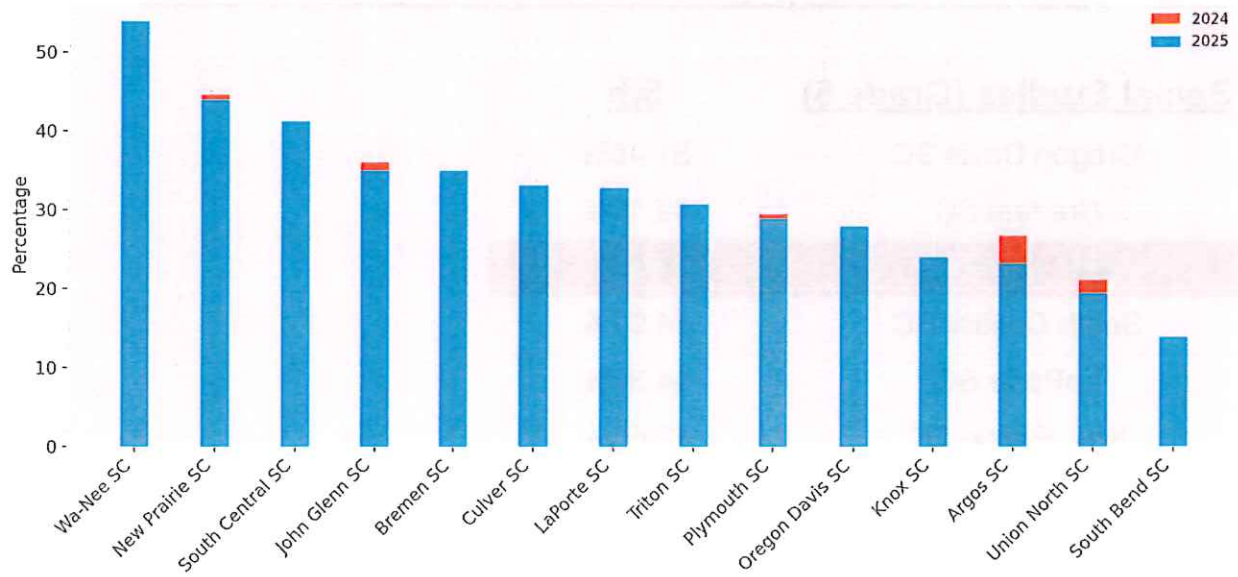
2025 ILEARN Scores- WES, NL, and Urey (Grades 3-8)

<u>Math (3-8)</u>	<u>3rd</u>	<u>4th</u>	<u>5th</u>	<u>6th</u>	<u>7th</u>	<u>8th</u>	<u>Total</u>
Wa-Nee SC	75.60%	73.30%	57.60%	70.10%	68.80%	62.00%	67.80%
South Central SC	81.90%	73.40%	65.20%	53.20%	47.10%	50.00%	61.70%
New Prairie SC	69.50%	70.70%	61.30%	56.60%	49.80%	42.10%	58.00%
John Glenn SC	58.70%	48.40%	59.90%	48.00%	42.30%	39.90%	49.50%
Bremen SC	66.40%	47.90%	45.90%	48.70%	38.50%	51.00%	49.50%
LaPorte SC	59.20%	57.20%	46.90%	47.90%	38.40%	40.90%	48.50%
Culver SC	66.10%	56.40%	44.00%	43.80%	22.60%	37.50%	45.20%
Oregon Davis SC	45.70%	66.70%	60.00%	40.60%	26.30%	27.00%	42.80%
Triton SC	44.20%	53.30%	31.30%	53.40%	35.20%	28.20%	41.30%
Plymouth SC	48.80%	49.30%	40.10%	38.00%	31.20%	32.40%	40.00%
Knox SC	38.10%	53.20%	36.70%	20.30%	31.30%	40.40%	36.70%
Argos SC	35.10%	46.30%	55.00%	25.00%	23.50%	33.30%	35.80%
Union North SC	45.50%	35.00%	41.70%	30.90%	23.70%	12.60%	32.00%
South Bend SC	25.00%	23.90%	16.70%	17.50%	13.80%	15.50%	18.80%

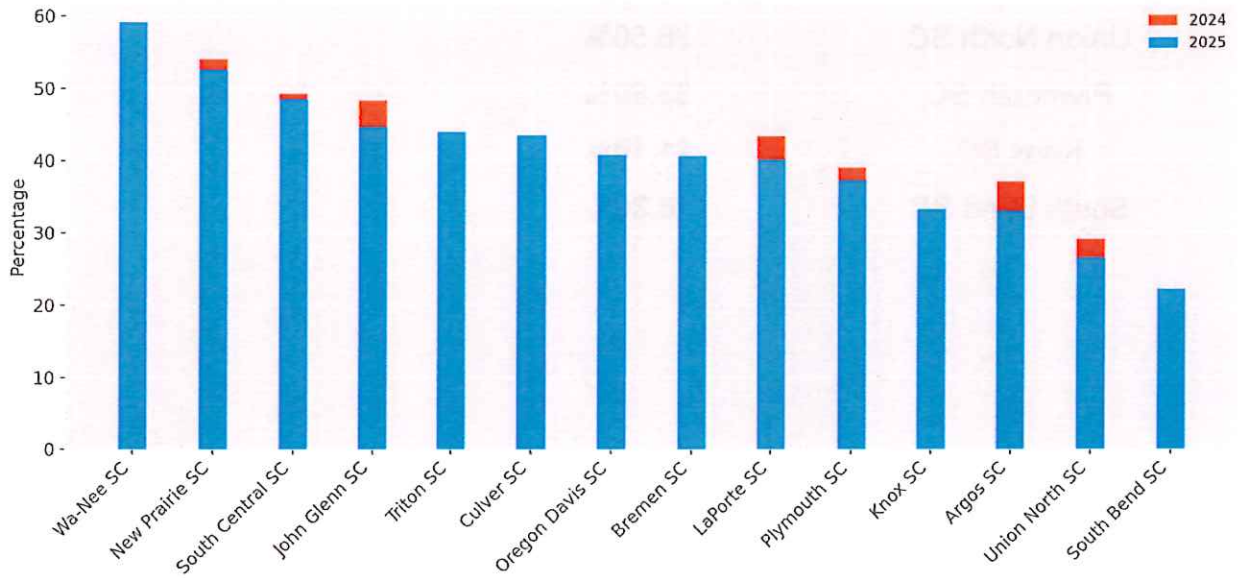
2025 ILEARN Scores- WES, NL, and Urey (Grade 5)

<u>Social Studies (Grade 5)</u>	<u>5th</u>
Oregon Davis SC	51.40%
Bremen SC	49.10%
John Glenn SC	46.50%
South Central SC	44.90%
LaPorte SC	44.30%
New Prairie SC	42.60%
Argos SC	42.50%
Culver SC	40.00%
Triton SC	38.80%
Wa-Nee SC	37.60%
Union North SC	36.50%
Plymouth SC	33.80%
Knox SC	21.10%
South Bend SC	16.30%

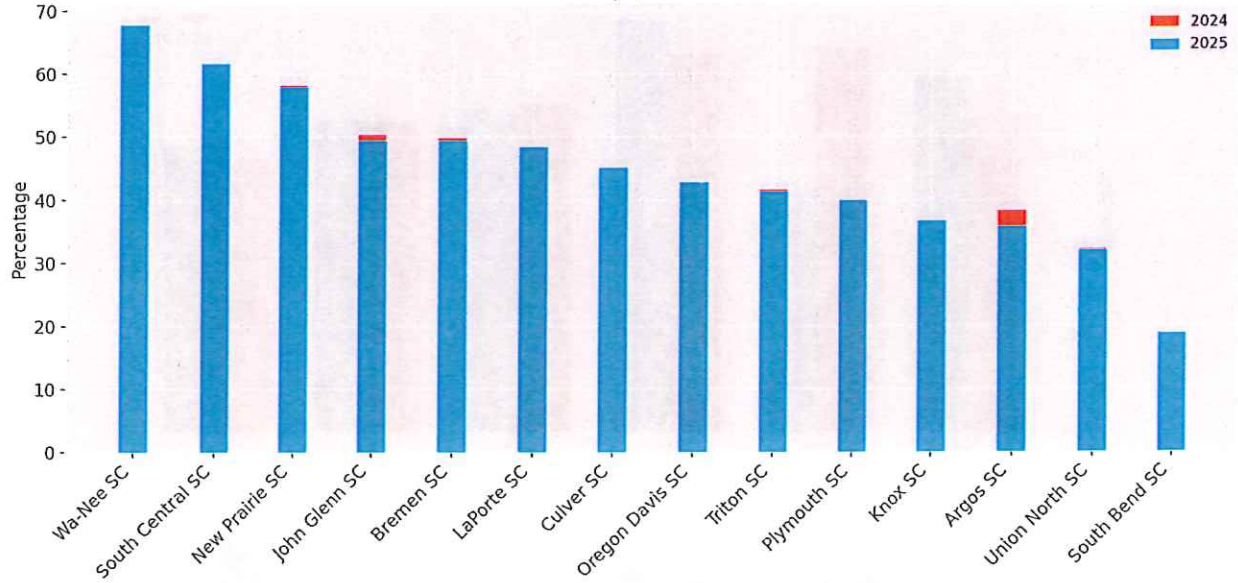
ELA and Math Combined (2024 vs 2025)



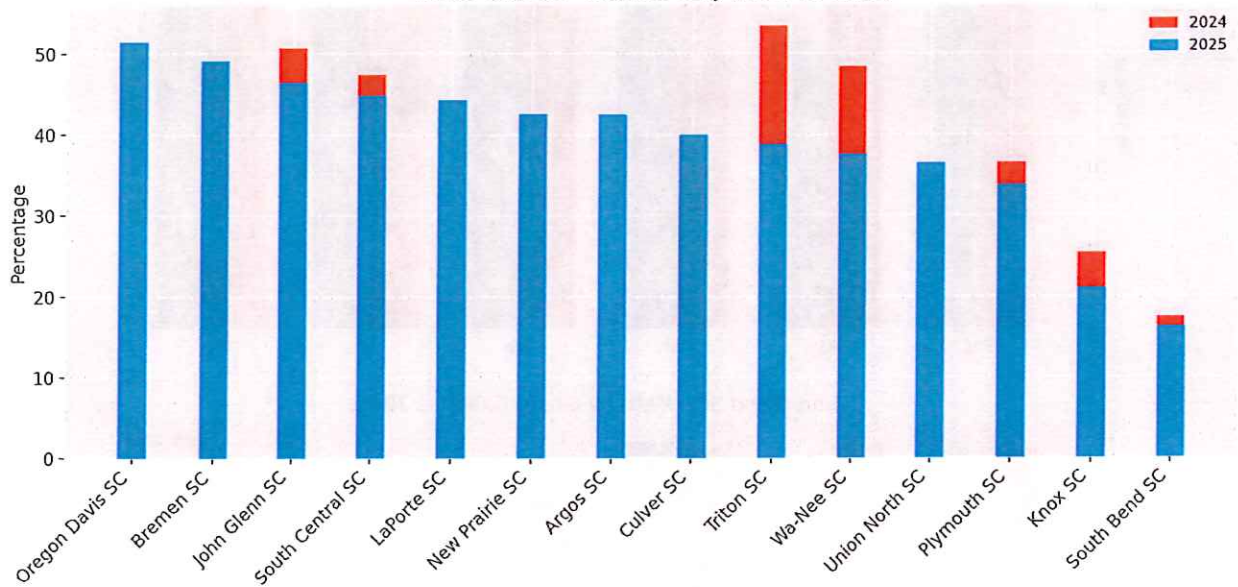
ELA Only (2024 vs 2025)



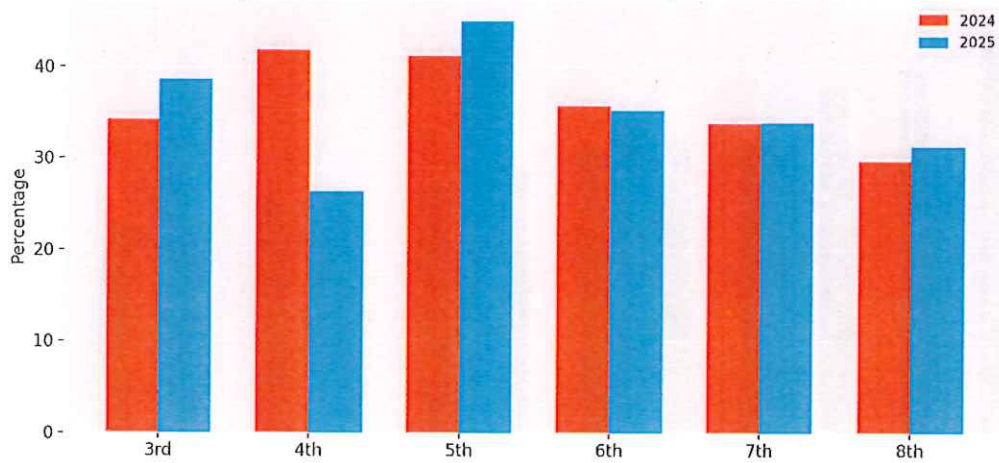
Math Only (2024 vs 2025)



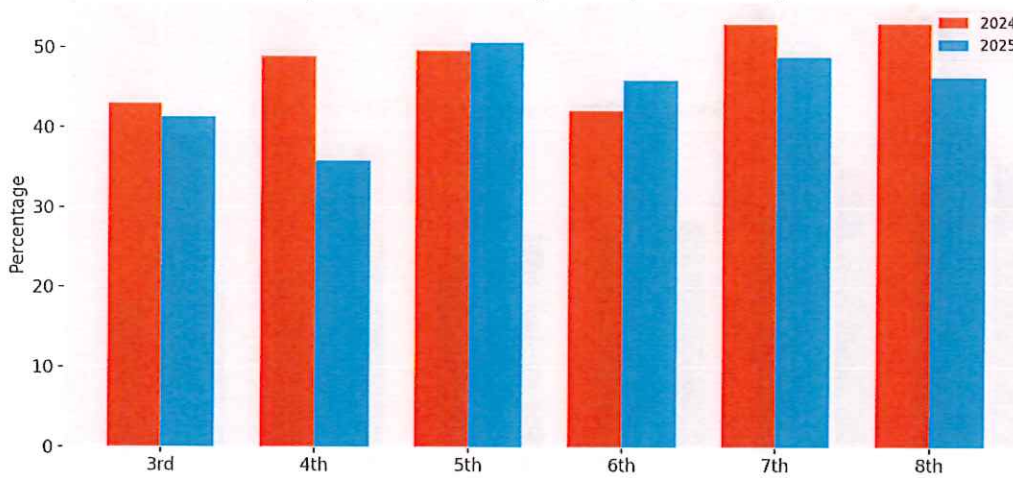
Social Studies - Grade 5 Only (2024 vs 2025)



John Glenn SC - ELA and Math Combined (2024 vs 2025)



John Glenn SC - ELA by Grade (2024 vs 2025)



John Glenn SC - Math by Grade (2024 vs 2025)

